



# THE BLUE RIDGE

See Reverse Side  
for Floor Plans

- 1 level with 3 bedrooms/2 bathrooms, built on a crawlspace
- 1,625 heated square feet, 407 unheated square feet
- An optional unfinished or finished basement can be added. A finished basement adds a 2nd master suite with bath, family room, and 1,230 heated square feet
- Covered porches
- Ventless gas fireplace
- 8x6 D logs on main level with a 30 Year Manufacturer Warranty
- Log siding and cedar shake siding on gable ends
- Optional stacked stone on foundation
- Vaulted ceilings
- Many interior finishing options are available



©2009 The Powell Group

The Blue Ridge - updated 1/5/09

**THE POWELL  
GROUP**

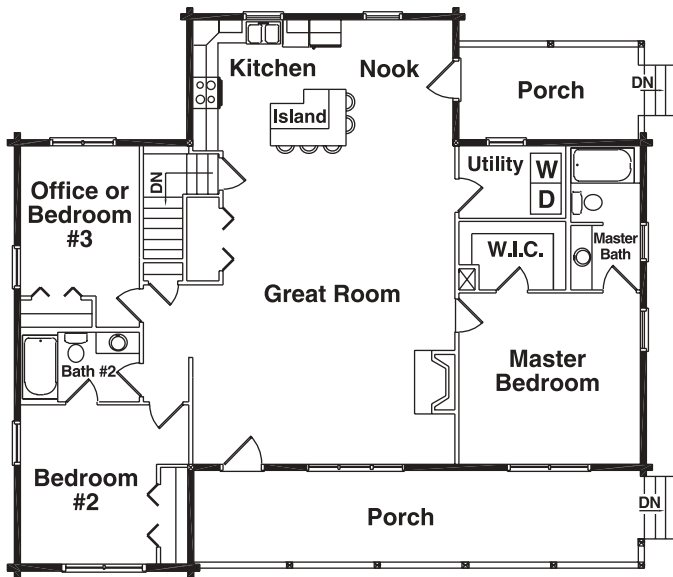
**A Custom Home  
Development  
Company**

4360A Dale Farm Road  
Morganton, NC 28655

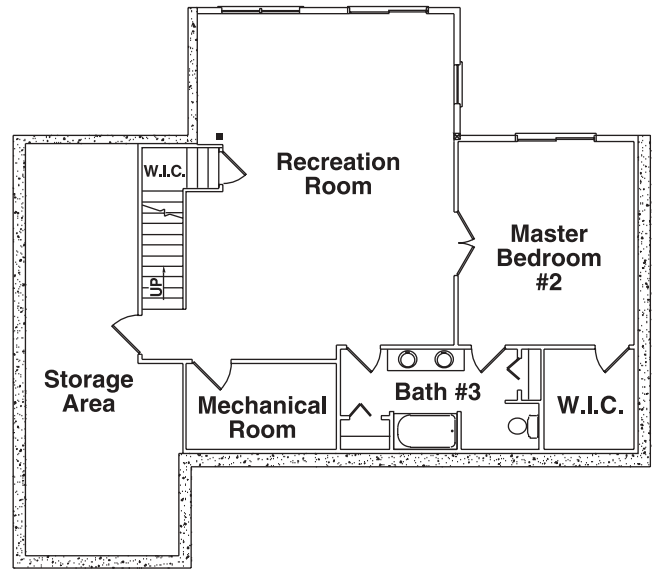
mobile **828-443-9324** • office 828-438-9077 • fax 828-438-1521  
email [info@thepowellgroup.net](mailto:info@thepowellgroup.net)

[www.thepowellgroup.net](http://www.thepowellgroup.net)

## 1st Floor Plan



## Optional Floor Plan (Basement)



## THE BLUE RIDGE

### Square Foot Totals

1st Floor = 1,625 ft<sup>2</sup>

Optional Basement = 1,230 ft<sup>2</sup>

Total Heated ft<sup>2</sup> = 2,855 ft<sup>2</sup>

Basement = 395 ft<sup>2</sup>

Porch = 407 ft<sup>2</sup>

Total Unheated ft<sup>2</sup> = 802 ft<sup>2</sup>