



# THE HIDEOUT

See Reverse for Floor Plans  
and Square Footage Totals

- 1½ story with 2 bedrooms/2 baths and a loft, built on a crawlspace
- 1,217 heated square feet, 472 unheated square feet
- An optional finished or unfinished basement can be added. A finished basement adds 1 bedroom, bath, family room, and 720 heated square feet
- Covered porch and open deck
- 8x6 D logs on main level with a 30 Year Manufacturer Warranty
- Matching log siding on the second level
- Optional stacked stone on foundation
- Ventless gas fireplace
- Many interior finishing options are available



©2009 The Powell Group

The Hideout - updated 1/5/09

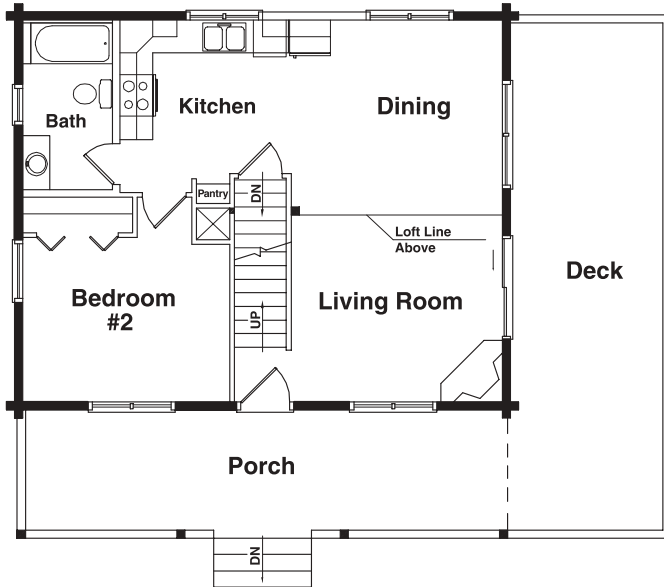
**THE POWELL  
GROUP**

**A Custom Home  
Development  
Company**

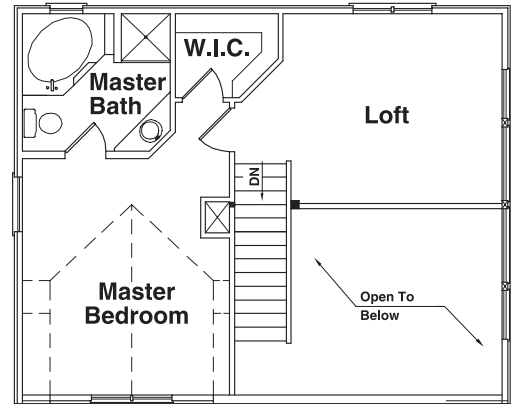
4360A Dale Farm Road  
Morganton, NC 28655

mobile **828-443-9324** • office 828-438-9077 • fax 828-438-1521  
email [info@thepowellgroup.net](mailto:info@thepowellgroup.net) [www.thepowellgroup.net](http://www.thepowellgroup.net)

## 1st Floor Plan

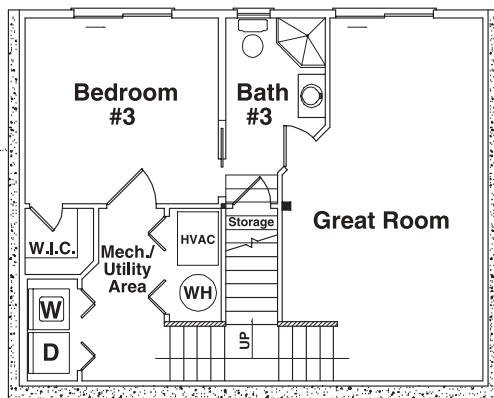


## 2nd Floor Plan



# THE HIDEOUT

## Optional Basement Floor Plan



### Square Foot Totals

1st Floor = 720 ft<sup>2</sup>

2nd Floor = 497 ft<sup>2</sup>

Optional Basement = 720 ft<sup>2</sup>

**Total Heated ft<sup>2</sup> = 1,937 ft<sup>2</sup>**

Deck = 320 ft<sup>2</sup>

Porch = 240 ft<sup>2</sup>

**Total Unheated ft<sup>2</sup> = 560 ft<sup>2</sup>**