



# THE LINVILLE

See Reverse Side  
for Floor Plans

- 1½ story on an unfinished basement with 2 master suites with baths and a loft
- 1,951 heated square feet, 2,796 unheated square feet
- An optional finished basement adds 3rd master suite with bath, family room and 804 heated square feet
- Covered porches
- Open decks
- 6x12 Logs on main level with a 30 Year Manufacturer Warranty
- Log siding or board and batten on second level
- Optional stacked stone on foundation
- Ventless gas fireplace
- Many interior finishing options are available



©2009 The Powell Group

The Linville - updated 1/5/09

**THE POWELL GROUP**

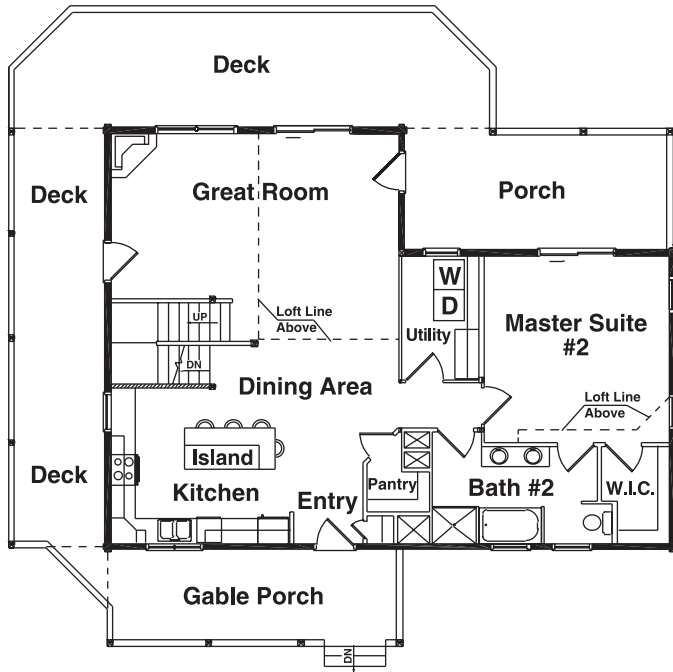
**A Custom Home  
Development  
Company**

4360A Dale Farm Road  
Morganton, NC 28655

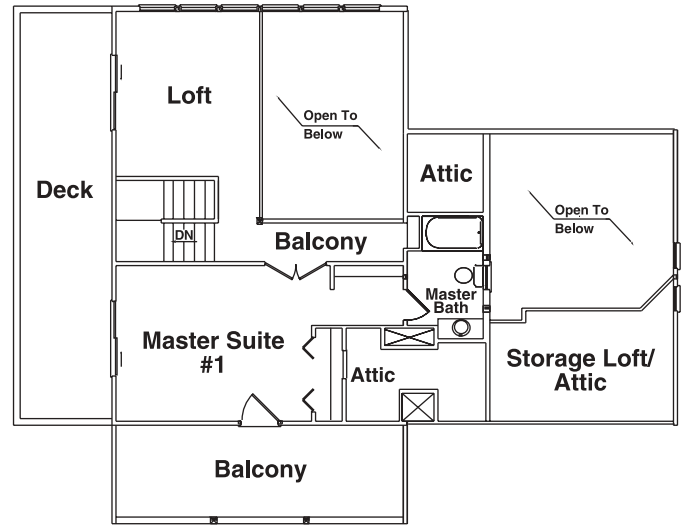
mobile **828-443-9324** • office 828-438-9077 • fax 828-438-1521  
email [info@thepowellgroup.net](mailto:info@thepowellgroup.net)

[www.thepowellgroup.net](http://www.thepowellgroup.net)

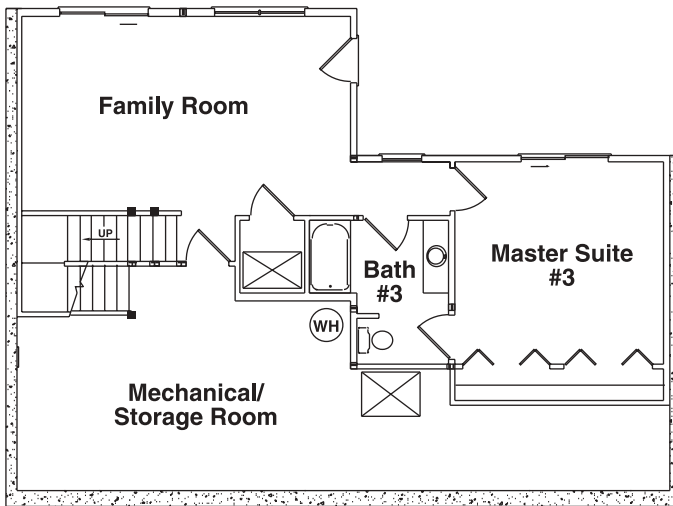
## 1st Floor Plan



## 2nd Floor Plan



## Optional Basement Floor Plan



# THE LINVILLE

### Square Foot Totals

1st Floor = 1,344 ft<sup>2</sup>

2nd Floor = 587 ft<sup>2</sup>

Optional Basement = 804 ft<sup>2</sup>

**Total Heated ft<sup>2</sup> = 2,735 ft<sup>2</sup>**

Unfinished Basement = 540 ft<sup>2</sup>

Rear Porch = 220 ft<sup>2</sup>

Gable Porch = 192 ft<sup>2</sup>

Lower Deck = 656 ft<sup>2</sup>

Upper Decks = 384 ft<sup>2</sup>

**Total Unheated ft<sup>2</sup> = 1,992 ft<sup>2</sup>**