



THE RIDGELINE

See Reverse Side
for Floor Plans

- 1½ story on an unfinished basement with 3 bedrooms/2½ baths and a loft
- 2,253 heated square feet, 2,634 unheated square feet
- An optional finished basement adds 2nd master suite with bath, family room, and 1,171 heated square feet
- Covered screen patio & open decks
- Covered porches
- 6x12 Logs on main level with a 30 Year Manufacturer Warranty
- Log siding, cedar shake siding or board and batten on second level
- Optional stacked stone on foundation
- Ventless gas fireplace
- Heavy Timber open design
- Porte Co-Chere
- Many interior finishing options are available



©2009 The Powell Group

The Ridgeline - updated 1/5/09

**THE POWELL
GROUP**

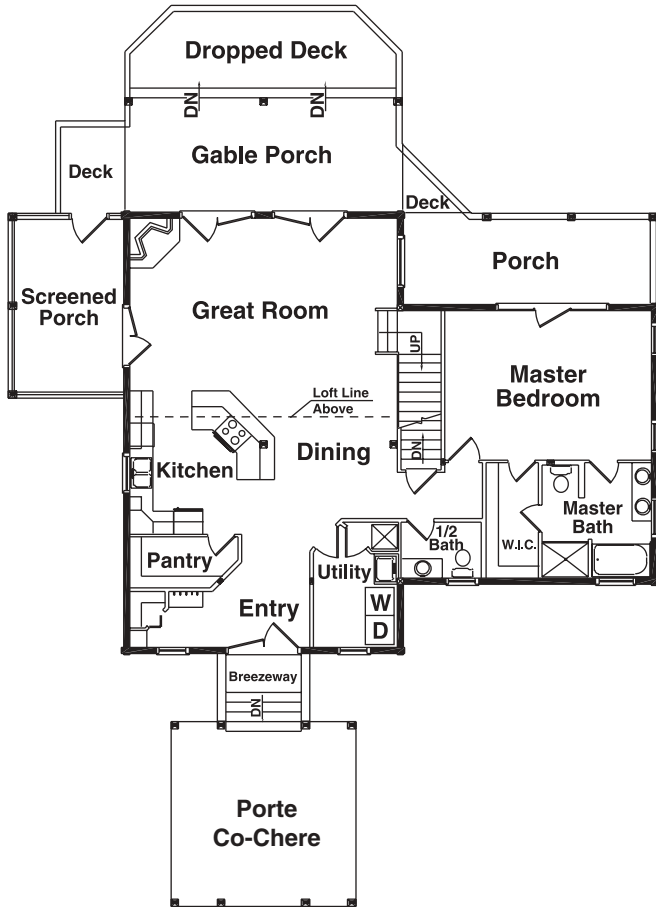
**A Custom Home
Development
Company**

4360A Dale Farm Road
Morganton, NC 28655

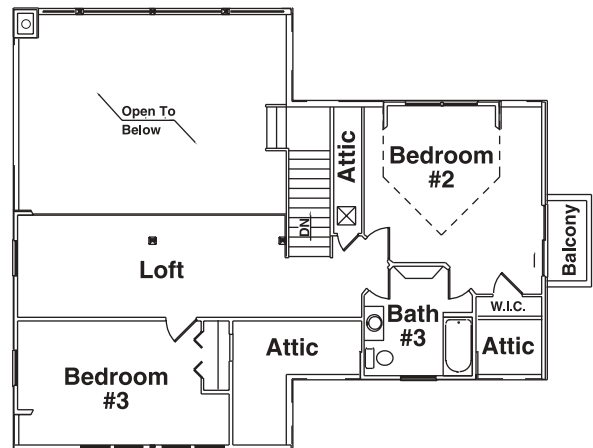
mobile **828-443-9324** • office 828-438-9077 • fax 828-438-1521
email info@thepowellgroup.net

www.thepowellgroup.net

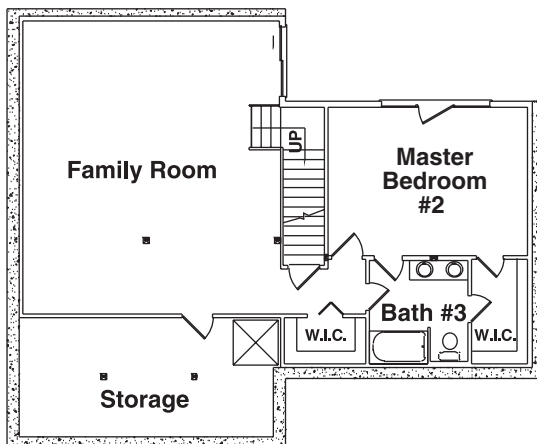
1st Floor Plan



2nd Floor Plan



Optional Basement Floor Plan



THE RIDGELINE

Square Foot Totals

1st Floor = 1,440 ft²

2nd Floor = 793 ft²

Optional Basement = 1,171 ft²

Total Heated ft² = 3,404 ft²

Basement = 269 ft²

Deck = 242 ft²

Porch = 656 ft²

Balcony = 40 ft²

Total Unheated ft² = 1,207 ft²